



RU5 RAW NAIVE SMOOTH RECT
120 X 120 / 48" X 48"

N31/M



RU5 RAW NAIVE SMOOTH RECT
60 X 120 / 24" X 48"

R60/M



RU5 RAW NAIVE SMOOTH RECT
60 X 60 / 24" X 24"

P07/M



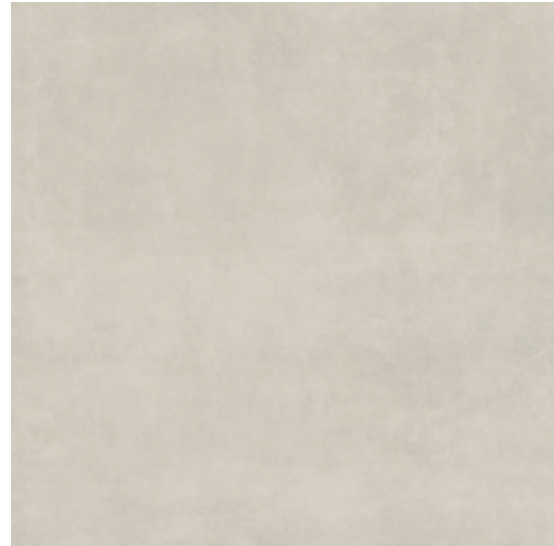
RU5 RAW CEMENT SMOOTH RECT
120 X 120 / 48" X 48"

N31/M



RU5 RAW CEMENT SMOOTH RECT
60 X 120 / 24" X 48"

R60/M



RU5 RAW COTTON SMOOTH RECT
120 X 120 / 48" X 48"

N31/M



RU5 RAW COTTON SMOOTH RECT
60 X 120 / 24" X 48"

R60/M



RU5 RAW COTTON SMOOTH RECT
60 X 60 / 24" X 24"

P07/M



RU5 RAW TOASTED SMOOTH RECT
120 X 120 / 48" X 48"

N31/M



RU5 RAW TOASTED SMOOTH RECT
60 X 120 / 24" X 48"

R60/M



RU5 RAW TOASTED SMOOTH RECT
60 X 60 / 24" X 24"

P07/M

C3 R11 RU5 ANTI-SLIP RAW COTTON RECT
120 X 120 / 48" X 48"

J16/M

C3 R11 RU5 ANTI-SLIP RAW COTTON RECT
60 X 120 / 24" X 48"

N74/M

C3 R11 RU5 ANTI-SLIP RAW TOASTED RECT
120 X 120 / 48" X 48"

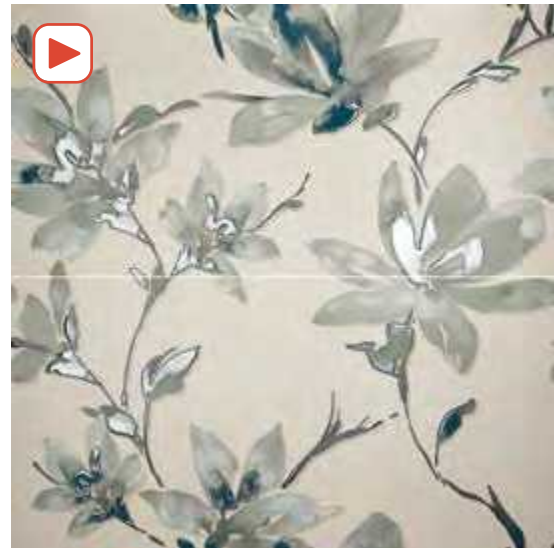
J16/M

C3 R11 RU5 ANTI-SLIP RAW TOASTED RECT
60 X 120 / 24" X 48"

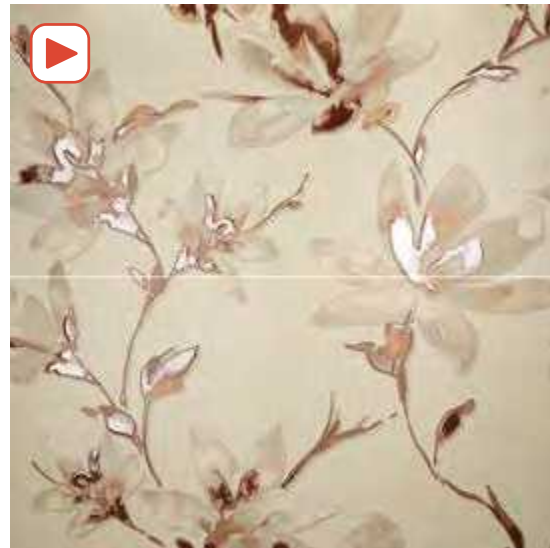
N74/M



DECOR SET(2) RAW TOASTED 60X120 RAW TOASTED SMOOTH RECT 60X120



DECOR SET(2) RAW NAIVE
60 X 120 / 24" X 48" **K95/P**



DECOR SET(2) RAW TOASTED
60 X 120 / 24" X 48" **K95/P**

DECOR SET(2) RAW COTTON
60 X 120 / 24" X 48" **K95/P**

DECOR SET(2) RAW CEMENT
60 X 120 / 24" X 48" **K95/P**



DECOR SET(2) FOLLAJE
60 X 120 / 24" X 48" **K68/P**



DECOR SET(2) AB TROPICAL
60 X 120 / 24" X 48" **K68/P**



DECOR SET(2) CD TROPICAL
60 X 120 / 24" X 48" **K68/P**

CARACTERÍSTICAS TÉCNICAS - TECHNICAL CHARACTERISTICS

P PORCELÁNICO/PORCELAIN TILES
GRÉS CERÁME/FEINSTEINZEUG

M MATE/MATT
MAT/MATT

R RECTIFICADO/RECTIFIED
RECTIFIÉ/KALIBRIERT

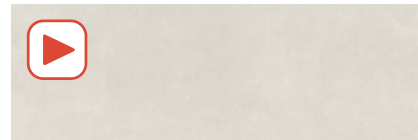
V2 VARIACION LEVE/SLIGHT VARIATION
LÉGERÉ VARIATION/LEICHT FARBSPIEL

ANT ANTIHIELO/FROST PROOF
RÉSISTANT AU GEL/FROSTSCHUTZ

VAR VARIACIÓN DE DISEÑO/GRAPHIC FACES/ TAMPONS DIFFÉRENTS:
120X120 - 3 PIEZAS/FACES/PIÈCES
60X120 - 6 PIEZAS/FACES/PIÈCES
60X60- 12 PIEZAS/FACES/PIÈCES



Para más información técnica, especificaciones e imágenes visite nuestra web
El embalaje de los artículos está sujeto a variaciones, para obtener el dato exacto y actual se recomienda consultar la web.
For more technical information, specifications and images, visit our website
The packing of our items is subject to variations. To get the most accurate and updated information, we recommend to check the website.
Pour plus d'informations techniques, de spécifications et de visuels, visitez notre site web
L'emballage des articles est sujet à variation, pour obtenir les données exactes et actuelles il est recommandé de consulter notre site web.



RAW NAIVE RECT
30 X 90 / 12" X 36"

J61/M



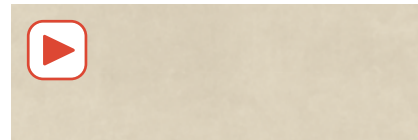
POLAN MIX NAIVE RECT
30 X 90 / 12" X 36"

J62/M



LATTICE NAIVE RECT
30 X 90 / 12" X 36"

J62/M



RAW TOASTED RECT
30 X 90 / 12" X 36"

J61/M



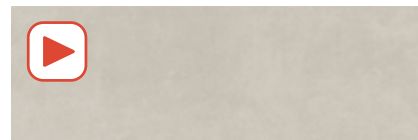
POLAN MIX TOASTED RECT
30 X 90 / 12" X 36"

J62/M



LATTICE TOASTED RECT
30 X 90 / 12" X 36"

J62/M



RAW COTTON RECT
30 X 90 / 12" X 36"

J61/M



POLAN MIX COTTON RECT
30 X 90 / 12" X 36"

J62/M



TARIMA COTTON RECT
30 X 90 / 12" X 36"

J62/M



TARIMA TOASTED RECT
30 X 90 / 12" X 36"

J62/M



TARIMA BLACK RECT
30 X 90 / 12" X 36"

J62/M

Pavimentos Recomendados / Recommended Floor Tiles :
Tarima Toasted - Raw Toasted rect.60x60 - Kinwood Walnut
Tarima Cotton - Raw Cotton Rect.60x60 - Kinwood Walnut
Tarima Black - Kinwood Walnut
Lattice Naive - Kinwood Walnut
Lattice Toasted - Kinwood Walnut

CARACTERÍSTICAS TÉCNICAS · TECHNICAL CHARACTERISTICS

PB PASTA BLANCA/WHITE BODY
PÂTE BLANCHE/WEISSSCHERBIG

R RECTIFICADO/RECTIFIED
RECTIFIÉ/KALIBRIERT

V VARIACIÓN DE DISEÑO/GRAPHIC FACES/ TAMPONS DIFFÉRENTS:
RAW 30X90 - 16 PIEZAS/FACES/PIÈCES
TARIMA - 8 PIEZAS/FACES/PIÈCES
POLAN - 6 PIEZAS/FACES/PIÈCES
LATTICE - 8 PIEZAS/FACES/PIÈCES

R REVESTIMIENTO/WALL TILE
FAÏENCE/WANDFLIESEN

V2 VARIACION LEVE/SLIGHT VARIATION
LÉGERE VARIATION/LEICHT FARBSPIEL

M MATE/MATT
MAT/MATT



Para más información técnica, especificaciones e imágenes visite nuestra web
El embalaje de los artículos está sujeto a variaciones, para obtener el dato exacto y actual se recomienda consultar la web.
For more technical information, specifications and images, visit our website
The packing of our items is subject to variations. To get the most accurate and updated information, we recommend to check the website.
Pour plus d'informations techniques, de spécifications et de visuels, visitez notre site web
L'emballage des articles est sujet à variation, pour obtenir les données exactes et actuelles il est recommandé de consulter notre site web.

RAW COTTON RECT 30X90, KINWOOD CEDAR RECT 22X120, TARIMA COTTON RECT 30X90, LAVABO ENEA 120 CEN, RAW COTTON, BAÑERA, ADRA, BLANCO MATE.

